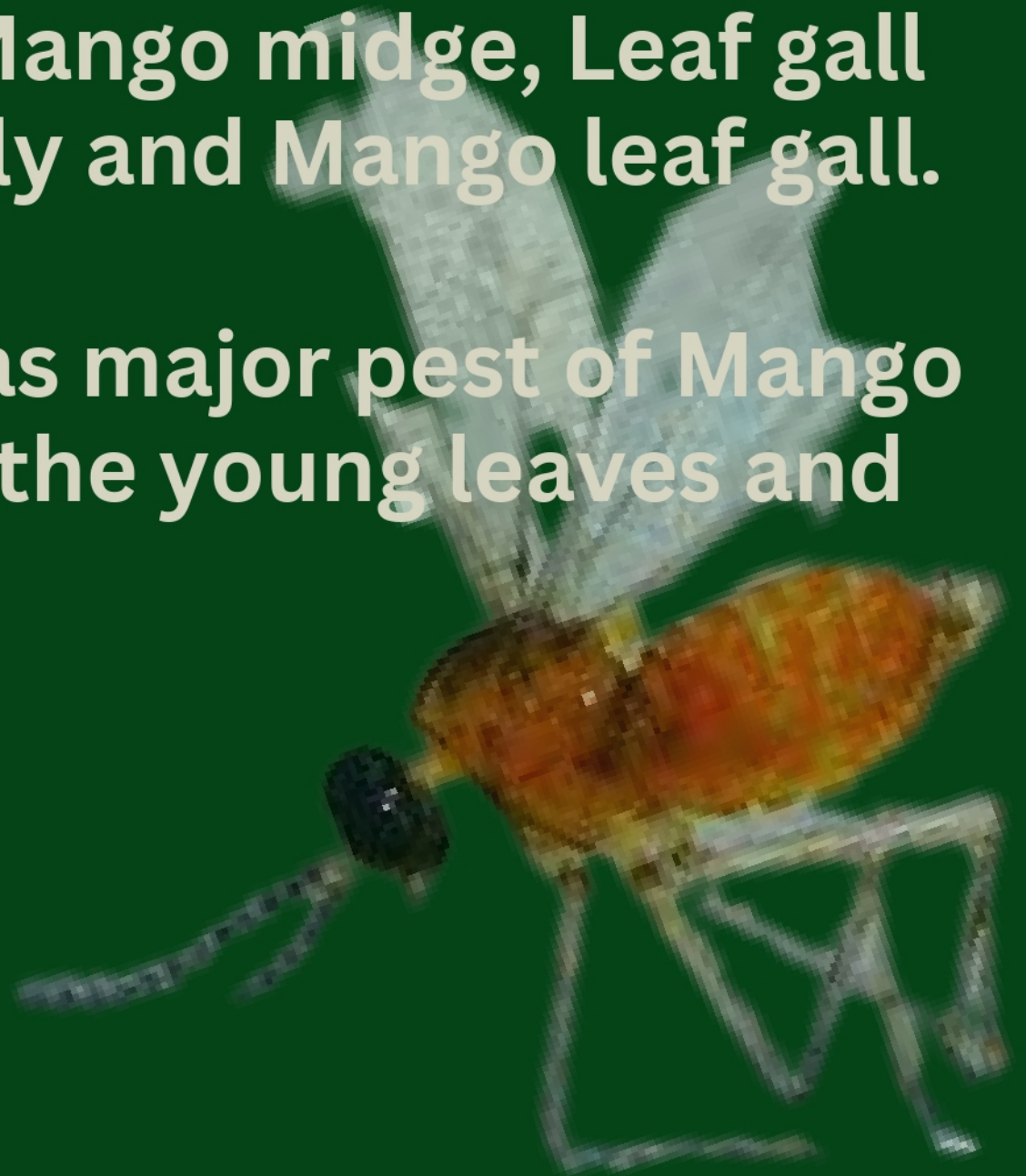


PEST *trivia*



WHAT IS CECID FLY?

- Cecid fly (*Procontarinia* spp.) belongs to the family Cecidomyiidae, order Diptera.
- Also called Mango midge, Leaf gall midge, Gall fly and Mango leaf gall.
- Considered as major pest of Mango which infest the young leaves and fruits.



LIFE CYCLE



- Eggs are small, white oblong laid on fruit or leaf surface and hatches in 1-2 days.

- Newly-hatched larva is creamy in color and bores on the fruit skin or on young leaves forming galls and feed inside.
- Larva stays on the fruit or leaves for 4-5 days and pop out to pupate.



- Initially yellowish and turns blackish-yellow as it matures.
- Pupation occurs in the soil and develops into adult after 2-3 days.

- Male adult fly measures 1.61mm while while the female measures 1.32mm.
- Adult have yellow-orange body and black head.
- Adult life span is about 1-2 days.



NATURE OF DAMAGE

- Infest young leaf and fruits from 32 to 70 days after flower induction (DAFI).
- Damage is usually associated with galling of young leaves.
- Fruits attacked produced circular, brown scab-like spots randomly distributed on the fruit surface.
- Damage is commonly called as “buti”, “nora-nora”, “kurikong” and “saksak walis” by growers.
- Infested fruits retain the scabby lesions up to harvest which affect the fruit quality.



NATURE OF DAMAGE



Damage in Leaves



Damage in Fruit



cpmd@buplant.da.gov.ph



(8)-236-0598

PREVENTIVE MEASURE

- Damaged fruit should be collected and disposed properly to destroy the lifecycle of the insect.
- Bag fruits early at 40 to 45 days after flower induction (DAFI).
- Underbrush and clear surrounding to destroy the habitat of the pests.
- Smudge early in the morning and in the afternoon during early fruit development stage to repel the insect.
- Prune trees to allow light penetration on the canopy to discourage the adult insect from staying.



CONTROL MEASURE

- Spray insecticide if adult population is high on monitored traps and or initial damaged is observed on fruits or leaves.
- Spray of insecticides early in the morning or in the afternoon. Mix insecticide with sticker especially if intermittent rain is experience in the area.
- Spray surrounding areas and vegetation to destroy population.
- Carbaryl or Lambdacyhalothrin is found effective to reduce infestation.



References :

DA-Bureau of Plant Industry, Guimaras National Crop Research, Development and Production Support Center San Miguel, Jordan, 5045 Guimaras, Philippines

Medina, C.dR. and Pamiloza, R.P. Cecid fly, *Procontarinia frugivora* Gagne. (Diptera: Cecidomyiidae). Crop Protection Cluster. College of Agriculture, UPLB, College, Laguna

Bureau of Plant Industry- Crop Pest Management Division. Management of Mango Cecid Fly. 692 San Andres Street, Malate Manila.



cpmd@buplant.da.gov.ph



(8)-236-0598